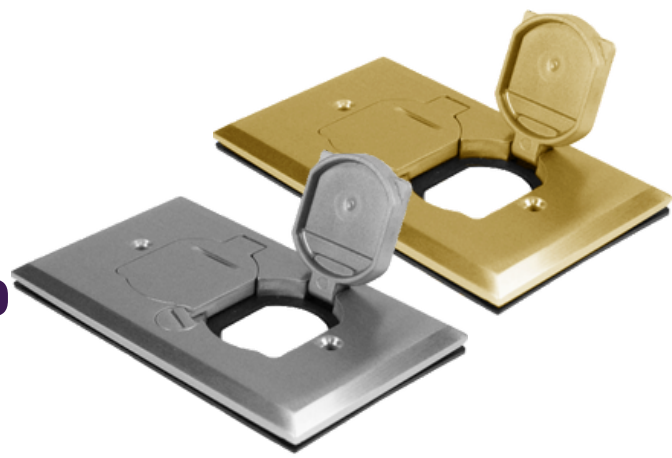


Enerlites®

1-GANG FLOOR BOX WITH FLIP LID



MODEL NO: **C975507-S, C975507-C**

DESCRIPTION

The ENERLITES C975507-S & C975507-C 1-gang floor box cover lays flush and features a flip-lid cover that is opened with use of a coin.

FEATURES

- For use with carpet and wood floors. Also great for counter-top applications
- Flooring types: tile, stone, wood, laminate, carpet, concrete and vinyl
- Wiring accepts #12-10 AWG stranded and solid copper wire
- Accepts any 15/20A duplex receptacle (not included)

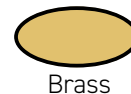
SPECIFICATIONS

Cover Material	Brass / Nickel-Plated Brass
Cover Dimensions	5" x 2-7/8" x 1/4"
Includes	Cover, Gaskets, Device Plates, and screws
Warranty	2 Years

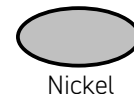
APPLICATIONS

- Cafes
- Airport Lounges
- Conference Rooms
- Laboratories
- Offices
- Restaurants
- Warehouses
- Basements
- Garages

TESTING & CODE COMPLIANCE



Brass



Nickel

MATERIALS

SPECIFICATION SUBMITTAL

Job Name

Job Number

Notes