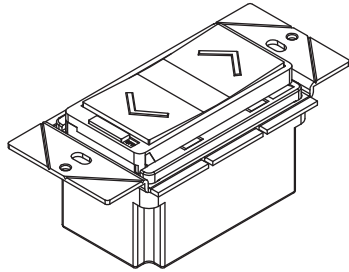


57302

Single Pole / 3-Way



SPECIFICATIONS

Voltage	120VAC, 60Hz
Incandescent/ Halogen.....	600W
Dimmable LED and Dimmable CFL.....	150W
Operating Temperature.....	32°F-104°F

DESCRIPTION/ FEATURES

The 57302 is an Incandescent/Halogen, LED & CFL dimmer. By itself, the 57302 is a single pole dimmer. Our unique wiring method allows for multiple switches (requires 57302-3K) to control a single Load at multiple locations

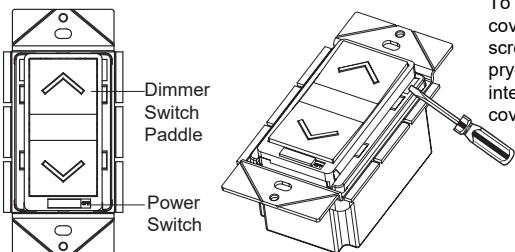
- Replaces current light switch using home's existing wiring
- Provides wider dimming range for dimmable LED and CFL bulbs than standard incandescent dimmers
- Suitable for multi-gang installations
- Dim lighting for increased energy savings
- Designed for compatibility with most high efficiency light bulbs.

OPERATIONS

Manual Control

This dimmer switch allows the user to:
Turn ON/OFF and control the brightness level of the connected LED lighting.

- Slide the power switch to turn the connected lights ON/OFF
- To turn ON the connected lighting: press top of the dimmer switch paddle and release.
- To brighten the connected lighting: press and hold the top of the dimmer switch paddle, release when desired level is achieved.
- To turn OFF the connected lighting: press bottom of the dimmer switch paddle and release.
- To dim the connected lighting: press and hold the bottom of the dimmer switch paddle, release when desired level is achieved.
- Slide the Power Switch to OFF position for bulb replacement.



To replace face cover, use a flat screwdriver to pry-off the interchangeable cover.

WARNING

Turn the POWER OFF at the circuit breaker before installing the Dimmer

Read and understand these instructions before installing. This device is intended for installation in accordance with the National Electric Code and local regulations. It is recommended that a qualified electrician performs this installation.

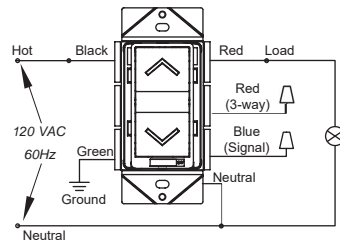
Use copper wire only

NOTES: 57302 can be used as a Single Pole or 3-way switch.

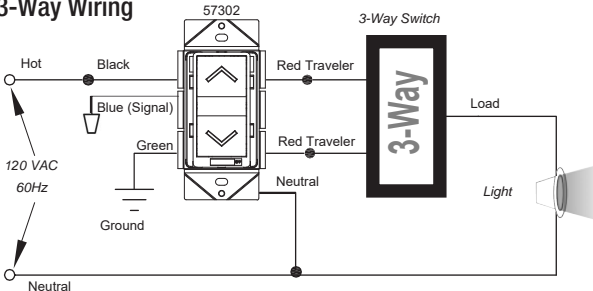
WIRING DIRECTIONS

1. Connect the HOT wire to the BLACK wire on the switch.
2. Connect the NEUTRAL wire to the WHITE wire on the switch.
3. Connect the load wire to the RED wire on the switch.
4. Connect GROUND wire to GREEN wire on the switch.
5. Mount the dimmer to the box with "UP" indicator pointing up.
6. Turn on Circuit Breaker

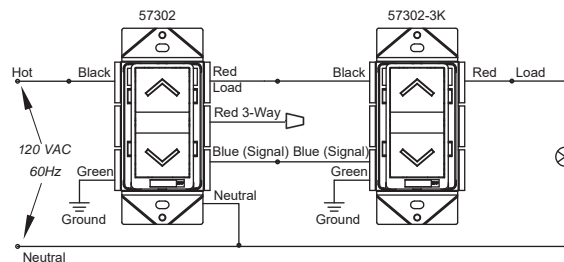
Single-Pole Wiring



3-Way Wiring

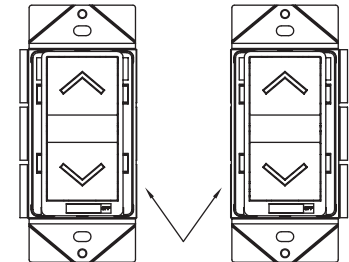


3-Way Wiring with 57302-3K remote dimmer



MULTIGANG INSTALLATION

When installing more than one control in the same wall box, it may be necessary to remove the side tabs before installing (see below). Using pliers, bend each tab back and forth until they break off. Repeat for each tab to be removed. Removal of tabs WILL REDUCE MAXIMUM LOAD CAPACITY.



Tabs Removed for Multigang installation

LED/CFL Derating Chart			
Load Capacity when Tabs are removed from:			
Dimmable LED/CFL	0 Sides	1 Side	2 Sides
	150W	150W	150W

When using the Dimmer to control LED/CFL lights **in conjunction** with another Dimmer to control Incandescent /Halogen lights follow this Derating Chart for Maximum Capacity on **EACH** device.

If the combined Wattage of ALL LED/CFL bulbs on 1 dimmer is:	Then the Maximum COMBINED Wattaged for the Incandescent/Halogen bulbs on EACH attached dimmer:		
	If NO Tabs are removed then Max Wattage is:	If 1 side of Tabs are removed then Max Wattage is:	If 2 sides of Tabs are removed then Max Wattage is:
0W	600W	500W	400W
1-25W	500W	400W	300W
26-50W	400W	300W	200W
51-75W	300W	200W	100W
76-100W	200W	100W	50W
101-125W	100W	50W	0W
126-150W	0W	0W	0W

If you are using ONLY LED/CFL bulbs on ALL Dimmers, DO NOT USE this Derating Chart. Follow the LED/ CFL Derating Chart.

WARRANTY INFORMATION

This device is warranted to be free of material and workmanship defects for 1 years from the date of purchase. Original receipt or proof of purchase from an authorized retailer must be presented upon warranty claim. ALL claims must be verified and approved by Enerlites, Inc. Warranties from other Enerlites products may vary. This warranty is nontransferable and does not cover normal wear and tear or any malfunction, failure, or defect resulting from misuse, abuse, neglect, alteration, modification, or improper installation. To the fullest extent permitted by the applicable state law, Enerlites shall not be liable to the purchaser or end user customer of Enerlites products for direct, indirect, incidental, or consequential damages even if Enerlites has been advised of the possibility of such damages. Enerlites' total liability under this or any other warranty, express or implied, is limited to repair, replacement or refund. Repair, replacement or refund are the sole and exclusive remedies for breach of warranty or any other legal theory.

