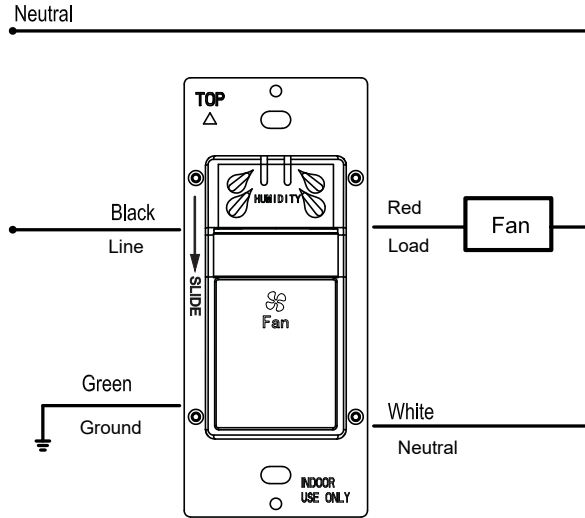
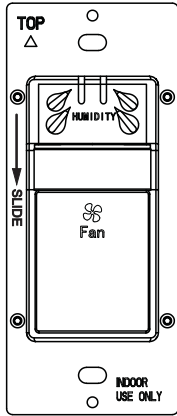


DWHS

Humidity Sensor and Fan Control



SPECIFICATIONS

Power.....	120VAC, 60Hz
Maximum fan load.....	3 Amps
Fan Time Delay.....	20 mins
Humidity range.....	45%-80% RH

DESCRIPTION

The DWHS is a 3Amp, single pole Humidity and fan control sensor switch. This Sensor helps conserve energy and automate the fan in which it is connected. When the humidity sensor detects excess humidity in a room it automatically turns on the ventilation fan. The sensor continues to monitor the air and automatically turns the fan off when the humidity level drops below its preset level.

WARNING

Turn the POWER OFF at the circuit breaker before installing the sensor

Read and understand these instructions before installing. This device is intended for installation in accordance with the National Electric Code and local regulations. It is recommended that a qualified electrician performs this installation. Make sure to turn off the circuit breaker or fuse(s) and make sure power is off before wiring the device.

Use copper wires only. NEUTRAL WIRE IS REQUIRED.

WIRING DIRECTIONS

1. Connect RED wire from sensor to the FAN wire.
2. Connect BLACK wire from sensor to the HOT wire.
3. Connect WHITE wire from sensor to the NEUTRAL wire.
4. Connect GREEN wire from sensor to the GROUND wire.

OPERATING INSTRUCTIONS

The DWHS features three adjustable humidity levels for customized control to suit the specific ventilation needs of the room. These humidity levels are as follows;

1. High Humidity (45% RH)
2. Medium Humidity (65% RH) *(default)
3. Low Humidity (80% RH)

Fan Mode: Manual ON, Auto OFF

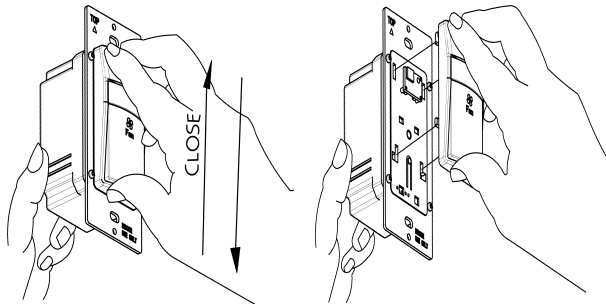
- a. Manual button is use to turn on the fan and automatically turn off after 20 minutes time delay.
- b. During the fan on state, if the manual button is use to turn off the fan before the time delay expires the fan will immediately turn off and the humidity sensor will stop working.
- c. Only when the manual button is used to turn ON again, after 20 minutes the humidity sensor will be operational again.

< i a [X]m i a cXY. '5i h: CBz'5i h: 'C: :

- a. The Fan will turn ON automatically when preset humidity level is reached and automatically turn OFF when the humidity level drops below the preset.
- b. If the humidity level is higher than preset for at least 3 minutes then the fan will continue to run after a 5 minutes break.
- c. When the manual button is used to turn OFF before the 20 minutes, the fan will turn OFF immediately and the humidity sensor will stop detecting. Only when the manual button is used to turn ON again, after 20 minutes the humidity sensor will be operational again. Expect a 3 minute delay for the automatic sensor to turn on the fan.

How to change the color cover/ push button.

The switch comes with the top cover attached. Remove the wall plate if necessary, then the cover may be changed as follow:



REMOVAL

Push down on the cover/ push button to release, then pull away from main body.

REATTACH

Align the latch pins to the unit, push the cover/ button against the main body, then slide up until its locked into place

PROGRAMMING

- **Function: Humidity Level**
 1. High Humidity
 2. Medium Humidity*default
 3. Low Humidity

STEP 1: Enter Programming Mode

- Press and hold the fan button for eight seconds until the bi-level LED light come on. The sensor is now in programming mode.

STEP 2: Choose the Setting

- Press the fan button the same number of times for that function (For example: Press the button 2 times to select "Medium Humidity").
 - After the last button is pressed the bi-level LED will flash back the current setting for that function 10 times at two-second intervals. If no selection has been made, the device will exit programming mode.

STEP 3: Save the Setting

- Press and hold the fan button for eight seconds. The bi-level LED light will flash 3 times and turn to white indicating that the settings are saved and the load will turn OFF.

EXAMPLE

Programming Example: Change humidity level of the switch from high to medium as follows:

1. **Press and hold** the fan button for eight seconds. The bi-color LED light will come on.
2. The bi-color LED light will now flash once every 2 seconds indicating the current setting, which is at High Humidity.
3. Press the fan button two times to choose "Medium Humidity" the bi-color LED light now will flashes two times every 2 seconds indicating the new setting at "Medium Humidity"
4. **Press and Hold** the fan button for eight seconds. The bi-color LED light will flash 3 times and turn to white indicating that the setting is saved and the load will turn OFF.

TROUBLESHOOTING

The switch button is not functional

Check if the device is wired properly. This device requires a NEUTRAL wire for operation. Often the WHITE wire is used as a LOAD wire. Be sure to test ALL wires. Also make sure that the HOT and LOAD wires are not reversed.

Press the Fan button:

- **If the load does not work and the indicator light is not on.** TURN OFF the power at the circuit breaker then check wire connections. Confirm that the NEUTRAL wire is connected.
If the humidity sensor does not turn on the fan.
- Change the humidity level to match the appropriate condition or manually turn ON the fan, after 20 minutes the humidity sensor will be operational.

WARRANTY INFORMATION

This device is warranted to be free of material and workmanship defects for 2 years from the date of purchase. Original receipt or proof of purchase from an authorized retailer must be presented upon warranty claim. ALL claims must be verified and approved by Enerlites, Inc. Warranties from other Enerlites products may vary. This warranty is nontransferable and does not cover normal wear and tear or any malfunction, failure, or defect resulting from misuse, abuse, neglect, alteration, modification, or improper installation. To the fullest extent permitted by the applicable state law, Enerlites shall not be liable to the purchaser or end user customer of Enerlites products for direct, indirect, incidental, or consequential damages even if Enerlites has been advised of the possibility of such damages. Enerlites' total liability under this or any other warranty, express or implied, is limited to repair, replacement or refund. Repair, replacement or refund are the sole and exclusive remedies for breach of warranty or any other legal theory.



© 2017 Enerlites Inc. CA,
U.S.A.
WWW.ENERLITES.COM
0210170105-04
REV 20230802