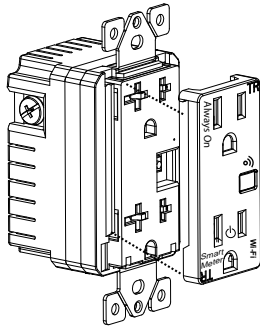


# INSTALLATION INSTRUCTIONS

**Model: WF15RM**  
**Wi-Fi Receptacle**  
**with Smart Meter**



## FEATURES

- Control your lights or small appliances with your smart devices without the need of any hub
- Easy to configure, easy to use free smart App by Enerwave
- Save energy by automating the ON/OFF times or using the timer
- Works with Amazon Alexa, Google Assistant through the Tuya App
- Features a top "Always On" outlet and a bottom "Smart" energy metering outlet
- Reduce energy consumption and enjoy wireless home automation with Smart Meter monitoring
- Interchangeable face covers included: White, Light Almond and Black

## SPECIFICATIONS

Voltage.....	120VAC, 60Hz
Incandescent.....	1000W
Electronic Ballast.....	5A
Standard Ballast.....	1200VA
Resistive.....	1800W (15A)
LED.....	150W
Motor.....	1/2HP
Protocol.....	IEEE 802.1b/g/n
Wireless Type.....	2.4GHz
System Requirements.....	Android 4.1 or higher/ iOS 8 or higher
Operating Temperature.....	32°-104°F (0°-40°C)

## REQUIREMENTS

- Secure 2.4GHz Wi-Fi network connection
- Smart Device such as a Smart Phone or Tablet with an operating system of Android version 4.1 or higher or iOS 9 or higher
- Installation of the ENERWAVE Smart App on the Smart Device

## WARNING

**Turn the POWER OFF at the circuit breaker before installing the smart receptacle.**

Read and understand these instructions before installing. This device is intended for installation in accordance with the National Electric Code and local regulations. It is recommended that a qualified electrician performs this installation. Make sure to turn off the circuit breaker or fuse(s) and make sure power is off before wiring the device.

**Use copper wire only.**

**This smart receptacle CANNOT be used if the outlet you are replacing has the top and bottom outlets controlled by separate circuit breakers.**

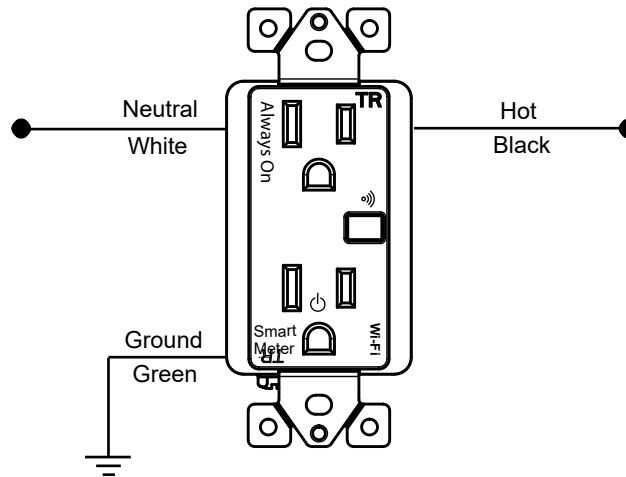
## WIRING DIRECTIONS

**DO NOT REVERSE ANY WIRES. DOING SO WILL VOID YOUR WARRANTY AND THE SMART RECEPTACLE WILL SHORT CIRCUIT.**

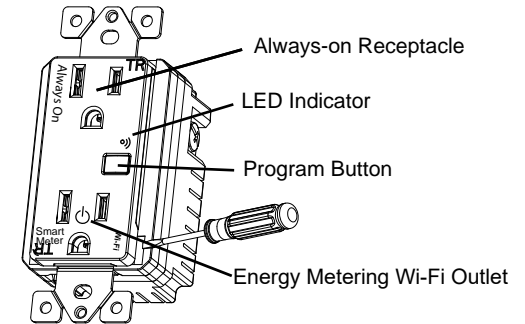
**Step 1.** Identify all your wires. Label the wires or draw a diagram of existing wires.

**Step 2.** Insert wires into the terminal holes on the back, then tighten the terminal screws.

- Connect the BLACK wire to the HOT terminal (brass screw).
- Connect the WHITE wire to the NEUTRAL terminal (silver screw).
- Connect the GREEN or BARE wire to the GROUND terminal (green screw).



## CHANGING THE FACE COVER



To replace the face cover, use a flat screwdriver and insert the tip at the gap shown in the diagram above and pry cover off. To re-install, simply align the cover and snap back on.

## FCC COMPLIANCE STATEMENT

FCC Grant of Equipment Authorizations of this device and transmitters installed in this device can be found at FCC website by entering the FCC ID number on the device.

**Caution:** Changes or modifications not expressly approved by the part responsible for compliance could void the user's right to operate the equipment. This device complies with Part 15 of the FCC Rules. Operation is subject to the following two conditions: (1) this device may not cause harmful interference, and (2) this device must accept any interference received, including interference that may cause undesired operation of the device.

This equipment has been tested and found to comply with the limits for a Class B digital device, pursuant to part 15 of the FCC rules. These limits are designed to provide reasonable protection against harmful interference in a residential installation. This equipment generates, uses and can radiate radio frequency energy and, if not installed and used in accordance with the instructions, may cause harmful interference to radio communications. However, there is no guarantee that interference will not occur in a particular installation. If this equipment does cause harmful interference to radio or television reception, which can be determined by turning the equipment off and on, the user is encouraged to try to correct the interference by one or more of the following measures:

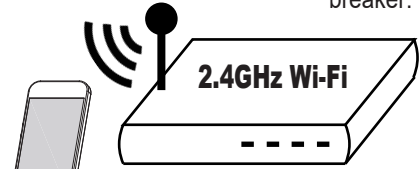
- Reorient or relocate the receiving antenna.
- Increase the separation between the equipment and receiver.
- Connect the equipment into an outlet on a circuit different from that to which the receiver is connected.
- Consult the dealer or an experienced radio/TV technician for help.

# Enerlites®

© 2019 Enerwave Home Automation  
 WWW.ENERLITES.COM  
 0206190142  
 REV 20230802

## INITIAL SETUP FOR Wi-Fi CONTROL

1. Connect the WF15RM, then turn on the circuit breaker.



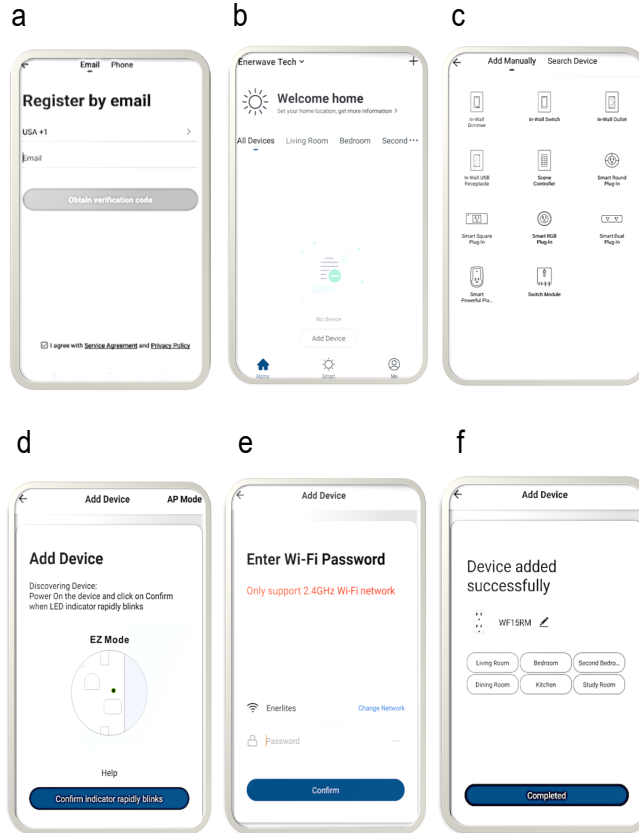
2. Connect your Smart Device (phone or tablet) to the same 2.4GHz Wi-Fi network that your WF15RM smart receptacle will be connecting to.

" Use your phone to search "ENERWAVE" from the App Store or Google Play. Once installed, open the App and follow the on-screen instructions to register then login. Follow the instructions in the App to connect the Smart Receptacle to your network. Over time, the App may be updated for a better experience or added features.

(" Be sure to first completely read then follow the in-App instructions closely:

- a. Login to the ENERWAVE App  
On your home screen, click on "Add Device"
- b. Device" or the "+" button
- c. Select the device type "In-Wall Outlet"
- d. When prompted to "Add Device in the default EZ mode, and the indicator LED is not already blinking green rapidly, press and hold the program button for 8 seconds. The LED indicator on the device will blink green rapidly
  - When LED indicator starts blinking green rapidly on the device, press "Confirm the indicator rapidly blinking"
  - Note: To pair the smart device using AP Mode, simply repeat this same process to make the indicator blink green slowly
- e. Enter your home's Wi-Fi network and password when prompted then click confirm
- f. After successfully adding the device, you can change the name of the device as desired

## Pairing Using EZ Mode (Default)

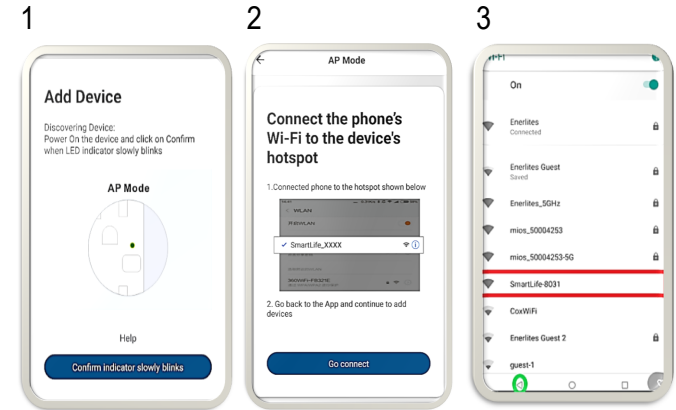


### LED INDICATOR ON DEVICE

- **Solid Green:** Device is connected to a power source, but it has not been paired.
- **Slow Blinking Green:** Device is attempting to pair with the controller while in AP mode. When LED turns off, the device has paired successfully
- **Fast Blinking Green:** Device is attempting to pair with the controller while in EZ mode. When LED turns off, the device has paired successfully
- **Solid Blue:** The device is paired and the power is turned ON
- **No Light:** The device is paired and the power is turned OFF

## Pairing Using AP Mode:

- Select AP Mode on top right corner of your screen
- Enter your home's 2.4GHz WiFi name and password
- Follow the on screen instructions and select "Go Connect"
- Select "SmartLife Network"
- Go back to the app to continue adding the device.



### SHARE DEVICE CONTROL WITH OTHERS

By default, the App will only allow one user to control the paired device. To also give other trusted users control, select the "Me" option on the bottom right corner of your Enerwave App home screen, then click on "Add family" to create a family that can have administrative control. Have your "Family Member" download the Enerwave App and register. Then, click on the created family then select "Add member" and enable the "Set As Administrator" option. Follow the on-screen instructions to send them an invitation for administrator access.

### WARRANTY INFORMATION

This device is warranted to be free of material and workmanship defects for 2 years from the date of purchase. Original receipt or proof of purchase from an authorized retailer must be presented upon warranty claim. ALL claims must be verified and approved by Enerwave, Inc. Warranties from other Enerwave products may vary. This warranty is nontransferable and does not cover normal wear and tear or any malfunction, failure, or defect resulting from misuse, abuse, neglect, alteration, modification, or improper installation. To the fullest extent permitted by the applicable state law, Enerwave shall not be liable to the purchaser or end user customer of Enerwave products for direct, indirect, incidental, or consequential damages even if Enerwave has been advised of the possibility of such damages. Enerwave' total liability under this or any other warranty, express or implied, is limited to repair, replacement or refund. Repair, replacement or refund are the sole and exclusive remedies for breach of warranty or any other legal theory.

# Enerlites®