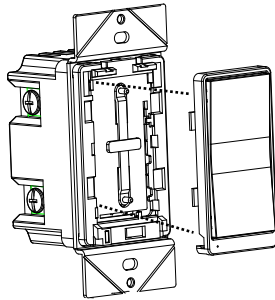


INSTALLATION INSTRUCTIONS

Model: WF15S
Wi-Fi On/Off Switch



FEATURES

- Control your lights with your smart devices without the need of any hub
- Easy to configure, easy to use free smart App by Enerwave
- Save energy by automating the ON/OFF times or using the timer
- Works with Amazon Alexa, Google Assistant through the Tuya App
- Single Pole or 3-Way compatible

SPECIFICATIONS

Voltage.....	120VAC, 60Hz
Incandescent.....	1000W
Electronic Ballast.....	5A
Standard Ballast.....	1200VA
Resistive.....	1800W (15A)
LED.....	150W
Motor.....	1/2HP
Protocol.....	IEEE 802.1b/g/n
Wireless Type.....	2.4GHz
System Requirements.....	Android 4.1 or higher/ iOS 8 or higher
Operating Temperature.....	32°-104°F (0°-40°C)

REQUIREMENTS

- Secure 2.4GHz Wi-Fi network connection
- Smart Device such as a Smart Phone or Tablet with an operating system of Android version 4.1 or higher or iOS 9 or higher
- Installation of the free ENERWAVE Smart App on the Smart Device
- Neutral wire required

WARNING

Turn the **POWER OFF** at the circuit breaker before installing the **smart Switch**

Read and understand these instructions before installing. This device is intended for installation in accordance with the National Electric Code and local regulations. It is recommended that a qualified electrician performs this installation.

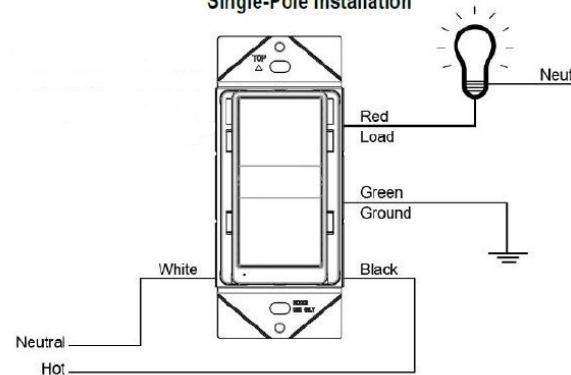
Use copper wire only

Only Use Wires with Minimum Temperature Rating 75°C (167°F)

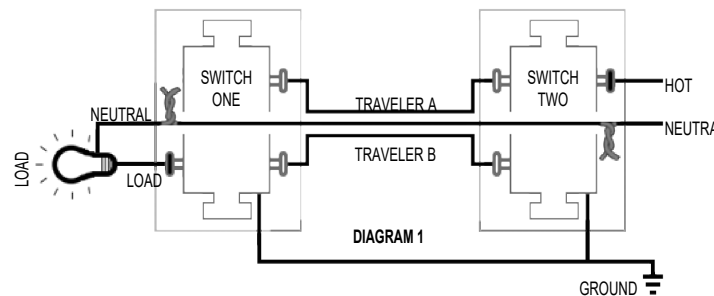
WIRING DIRECTIONS

First, find out if you will be controlling the lights from one location or multiple locations. Next, identify all the wires. Once you've identified the wires, follow the diagram below for wiring.

Single-Pole installation

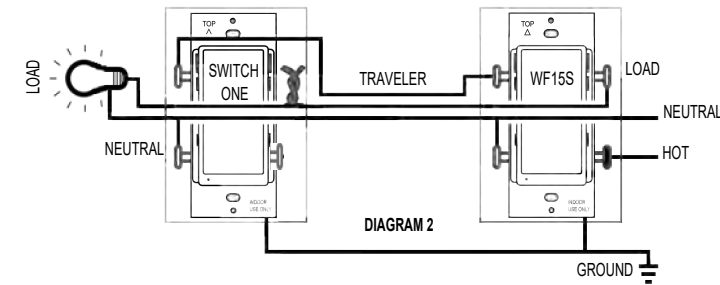


COMMON 3-WAY WIRING



- Step 1.** Identify all your wires (DIAGRAM 1). Label the wires or draw a diagram of existing wires.
- Step 2.** Convert the TRAVELER B wire to the LOAD wire. To do so, Take the LOAD wire and TRAVELER B wires off SWITCH 1 and connect them together with a wire nut (DIAGRAM 2).
- Step 3.** Connect the other end of the TRAVELER B wire to the LOAD terminal on WF15S
- Step 4.** Connect the NEUTRAL wire to both switches.
- Step 5.** Connect the TRAVELER A wire from the WF15S to one of the terminals on the 3-way switch.
- Step 6.** Connect the HOT wire to the HOT terminal on the WF15S.
- Step 7.** Connect the GROUND wire to the GROUND terminals on both switches.

RETROFIT WIRING



FCC COMPLIANCE STATEMENT

FCC Grant of Equipment Authorizations of this device and transmitters installed in this device can be found at FCC website by entering the FCC ID number on the device.

Caution: Changes or modifications not expressly approved by the part responsible for compliance could void the user's right to operate the equipment. This device complies with Part 15 of the FCC Rules. Operation is subject to the following two conditions: (1) this device may not cause harmful interference, and (2) this device must accept any interference received, including interference that may cause undesired operation of the device.

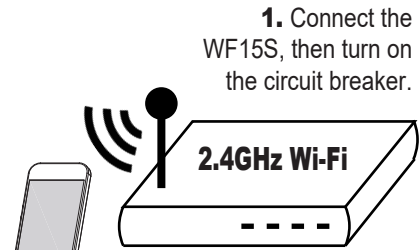
This equipment has been tested and found to comply with the limits for a Class B digital device, pursuant to part 15 of the FCC rules. These limits are designed to provide reasonable protection against harmful interference in a residential installation. This equipment generates, uses and can radiate radio frequency energy and, if not installed and used in accordance with the instructions, may cause harmful interference to radio communications. However, there is no guarantee that interference will not occur in a particular installation. If this equipment does cause harmful interference to radio or television reception, which can be determined by turning the equipment off and on, the user is encouraged to try to correct the interference by one or more of the following measures:

- Reorient or relocate the receiving antenna.
- Increase the separation between the equipment and receiver.
- Connect the equipment into an outlet on a circuit different from that to which the receiver is connected.
- Consult the dealer or an experienced radio/TV technician for help.

Enerlites®

© 2019 Enerwave Home Automation
WWW.ENERLITES.COM
0206190140
REV 20230802

INITIAL SETUP FOR Wi-Fi CONTROL



1. Connect the WF15S, then turn on the circuit breaker.

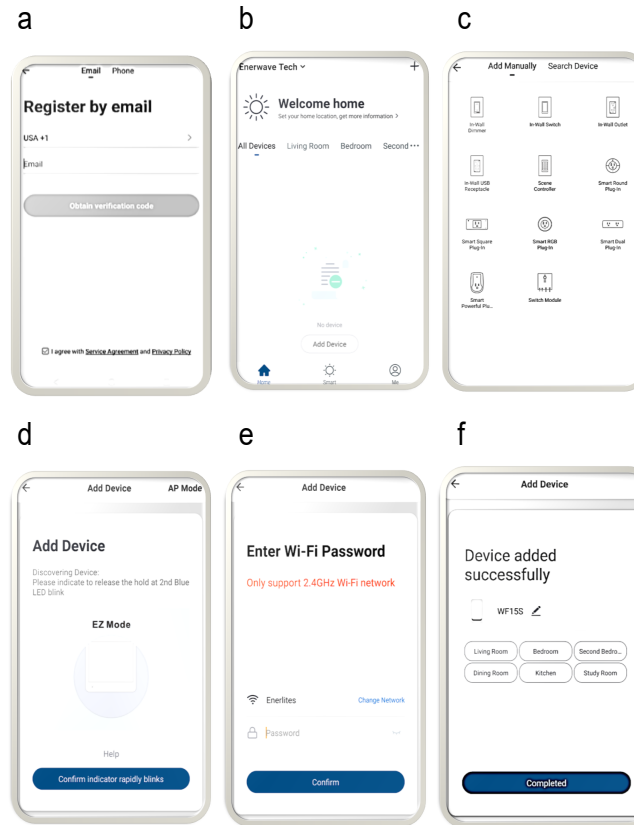
2. Connect your Smart Device (phone or tablet) to the same 2.4GHz Wi-Fi network that your WF15S smart switch will be connecting to.

3. Use your phone to search "ENERWAVE" from the App Store or Google Play. Once installed, open the App and follow the on-screen instructions to register then login. Follow the instructions in the App to connect the Smart Switch to your network. Over time, the App may be updated for a better experience or added features.

4. Be sure to first completely read then follow the in-App instructions closely:

- Login to the ENERWAVE App
On your home screen, click on "Add Device" or the "+" button
- Select the device type "In-wall switch"
- When prompted to "Add Device in the default EZ mode and the indicator LED is not already blinking green rapidly, press the downward paddle 5 times and hold down on the 6th press until you see three blinking blue LED lights, then you release on the second blue blink. The LED indicator on the device will blink green rapidly
- When LED indicator starts blinking green rapidly on the device, press "Confirm the indicator rapidly blinking"
- Note: To pair the smart device using AP Mode, simply repeat this same process to make the indicator blink green slowly
- Enter your home's Wi-Fi network and password when prompted then click confirm
- After successfully adding the device, you can change the name of the device as desired

Pairing Using EZ Mode (Default)

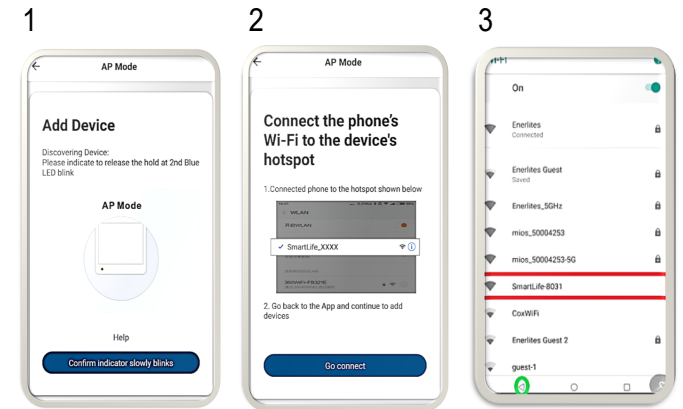


LED INDICATOR ON DEVICE

- Solid Green:** Device is connected to a power source, but it has not been paired.
- Slow Blinking Green:** Device is attempting to pair with the controller while in AP mode. When LED turns off, the device has paired successfully
- Fast Blinking Green:** Device is attempting to pair with the controller while in EZ mode. When LED turns off, the device has paired successfully
- Solid Blue:** The device is paired and the power is turned ON
- No Light:** The device is paired and the power is turned OFF

Pairing Using AP Mode:

- Select AP Mode on top right corner of your screen
- Enter your home's 2.4GHz WiFi name and password
- Follow the on screen instructions and select "Go Connect"
- Select "SmartLife Network"
- Go back to the app to continue adding the device



SHARE DEVICE CONTROL WITH OTHERS

By default, the App will only allow one user to control the paired device. To also give other trusted users control, select the "Me" option on the bottom right corner of your Enerwave App home screen, then click on "Add family" to create a family that can have administrative control. Have your "Family Member" download the Enerwave App and register. Then, click on the created family then select "Add member" and enable the "Set As Administrator" option. Follow the on-screen instructions to send them an invitation for administrator access.

WARRANTY INFORMATION

This device is warranted to be free of material and workmanship defects for 2 years from the date of purchase. Original receipt or proof of purchase from an authorized retailer must be presented upon warranty claim. ALL claims must be verified and approved by Enerwave, Inc. Warranties from other Enerwave products may vary. This warranty is nontransferable and does not cover normal wear and tear or any malfunction, failure, or defect resulting from misuse, abuse, neglect, alteration, modification, or improper installation. To the fullest extent permitted by the applicable state law, Enerwave shall not be liable to the purchaser or end user customer of Enerwave products for direct, indirect, incidental, or consequential damages even if Enerwave has been advised of the possibility of such damages. Enerwave' total liability under this or any other warranty, express or implied, is limited to repair, replacement or refund. Repair, replacement or refund are the sole and exclusive remedies for breach of warranty or any other legal theory.

Enerlites®

© 2019 Enerwave Home Automation
WWW.ENERLITES.COM
0206190140
REV 20230802